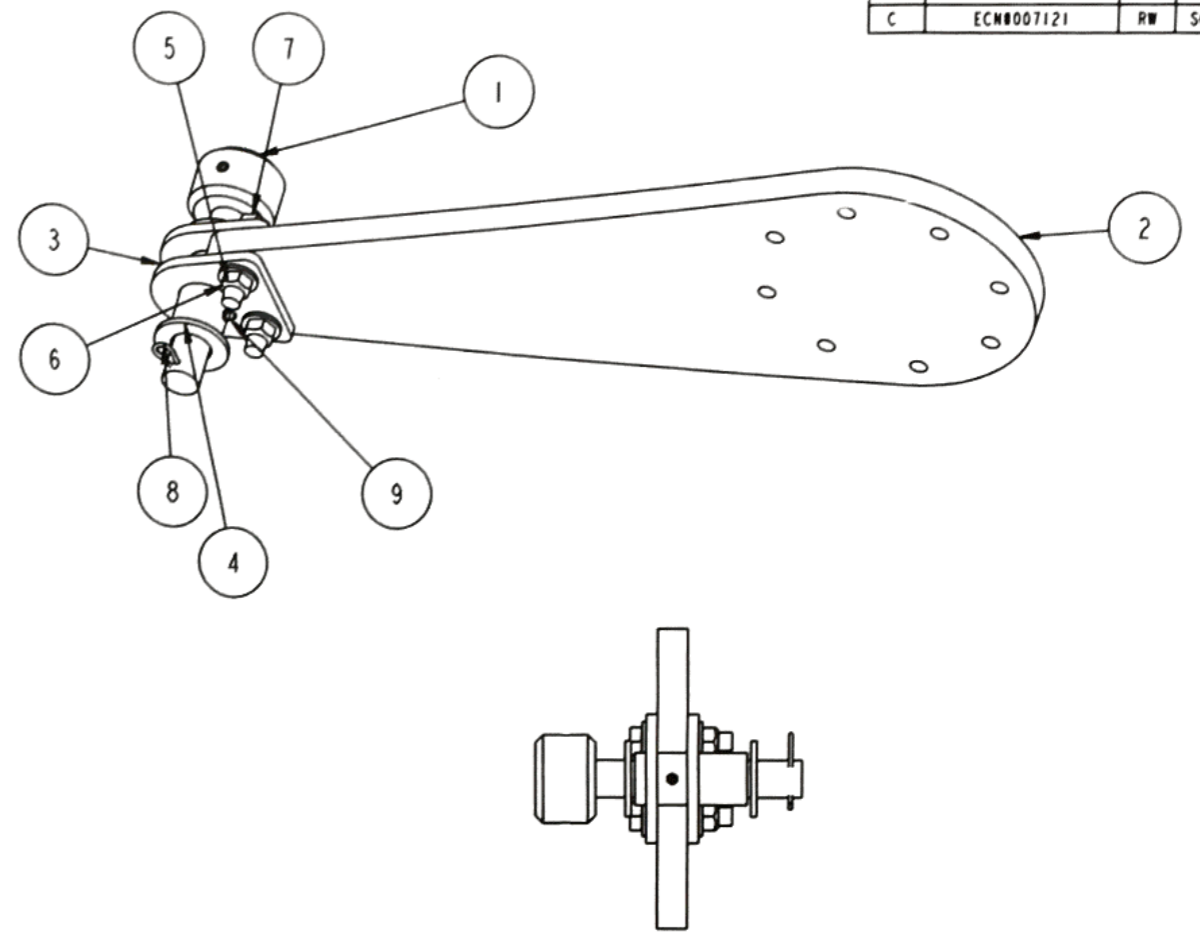
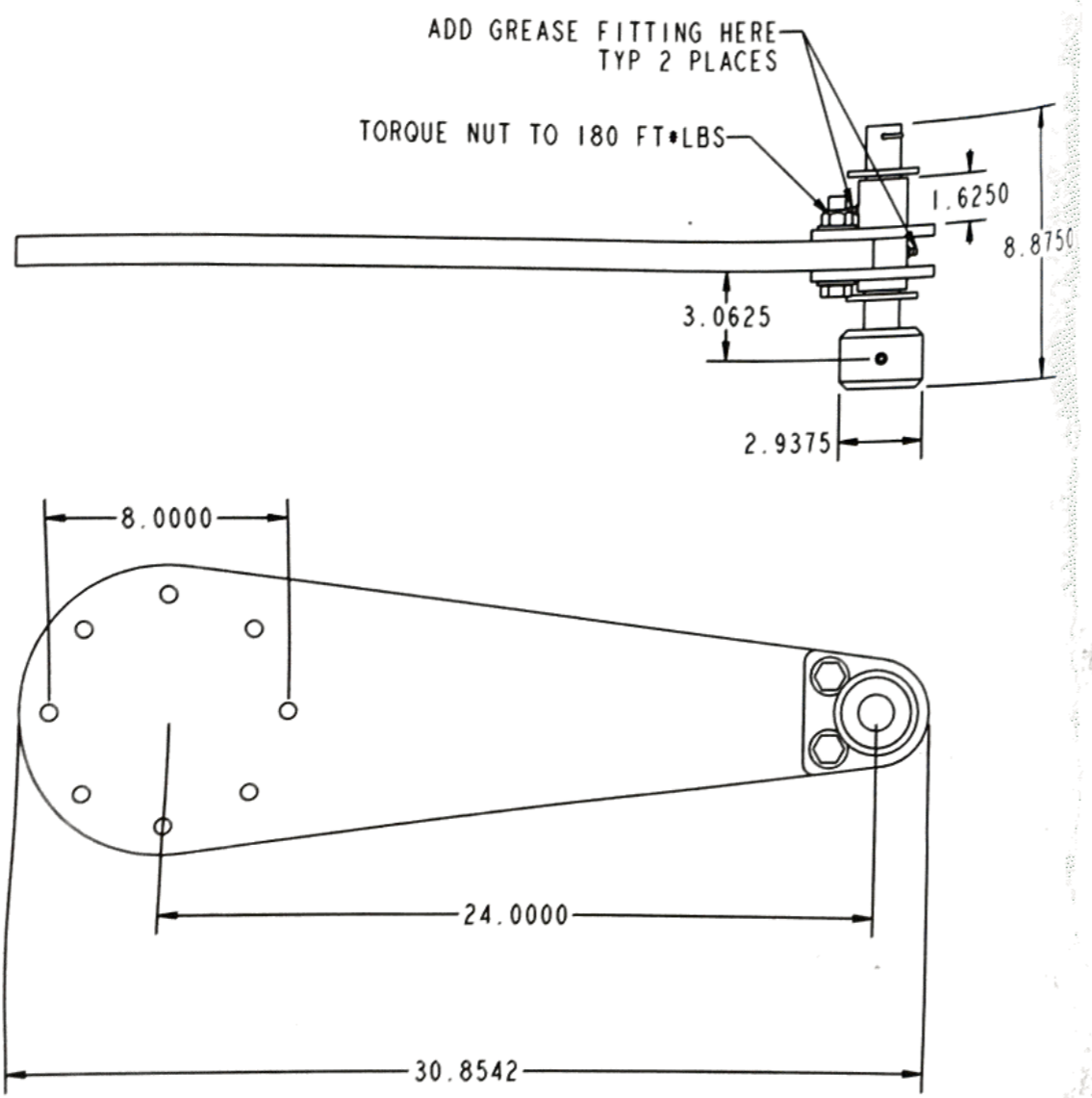


REVISIONS				
REV	DESCRIPTION	BY	APPR	DATE
C	ECN#007121	RW	SCG	11-SEP-15



ITEM	QTY	SP	DESCRIPTION	DWG. NO.	R.L.	REV	VER
9	2	PPT	GREASE NIPPLE, 1/4" - 28 H641	HDW_H641	In Work	B	17
8	1	PPT	HAIRPIN, 2-1/2" LONG	HDW_45286	In Work	A	6
7	2	PPT	BOLT, 5/8"-11 x 3" NC GR 8 ZINC PLATED HEX CAP	HDW_580_300_008Z	In Work	A	14
6	4	PPT	WASHER, 5/8" FLAT, GRADE 8	HDW_580_000_208Z	In Work	B	49
5	2	PPT	LOCKNUT, 5/8" ALL-METAL, ZINC, GRADE C	HDW_580_000_173Z	In Work	B	14
4	2	PPT	WASHER, 1 1/4" FLAT, GRADE 8	HDW_114_000_208Z	In Work		11
3	1	N	REMOVABLE FLIP ROOF BUSHING ASSEMBLY	40WF0345_01	In Work	B	2
2	1	N	STRAIGHT ALUMINUM FLIP ROOF ARM	40WF0344_01	In Work	B	8
1	1	N	CHANNEL ROLLER ASSY, 1-1/4" SHAFT	40SWF_000082_08	In Work	A	4

PROCESS INFO FOR REFERENCE ONLY SEE GLOBAL SHOP FOR PROCESS INFO

UNLESS OTHERWISE SPECIFIED DIMENSIONS ARE IN INCHES

TOLERANCES:
FRACTIONAL:
1/32" ±1/32
1/16"-1/2" ±1/16
ANGULAR:
MACHINED ±0.25°
BEND ±0.5°
DECIMALS:
TWO PLACE ±0.06
THREE PLACE ±0.031

INTERPRET GEOMETRIC TOLERANCING PER: ANSI

PROPRIETARY AND CONFIDENTIAL

THE INFORMATION CONTAINED IN THIS DRAWING IS THE SOLE PROPERTY OF TITAN TRAILERS INC. ANY REPRODUCTION IN PART OR AS A WHOLE WITHOUT THE WRITTEN PERMISSION OF TITAN TRAILERS INC. IS PROHIBITED.

RELEASE LEVEL: In Work
STOCK PART: N

THIRD ANGLE PROJECTION

MODELED BY: BB DATE: 18-NOV-13
DRAWN BY: BB DATE: 18-NOV-13
CHECKED BY: AM DATE: 18-NOV-13

DESC: ALUMINUM STRAIGHT ARM ASSEMBLY
SUITS KINEMATIC SE7C FLIP ROOF MOTOR
SUITS ENGLAND MESH FLIP ROOF TRAILER

MATERIAL DESCRIPTION: N/A

MATERIAL: N/A FINISH: N/A WEIGHT: 28.334 LBS.

DWG. NO.: 40WF0343_01
SCALE: 5:32 SHEET 1 OF 1

REV: C VER: 8

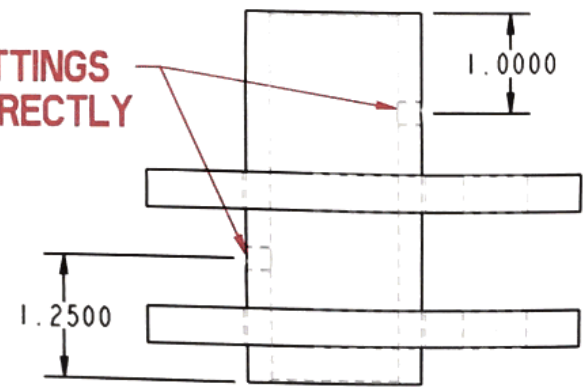
TITAN TRAILERS



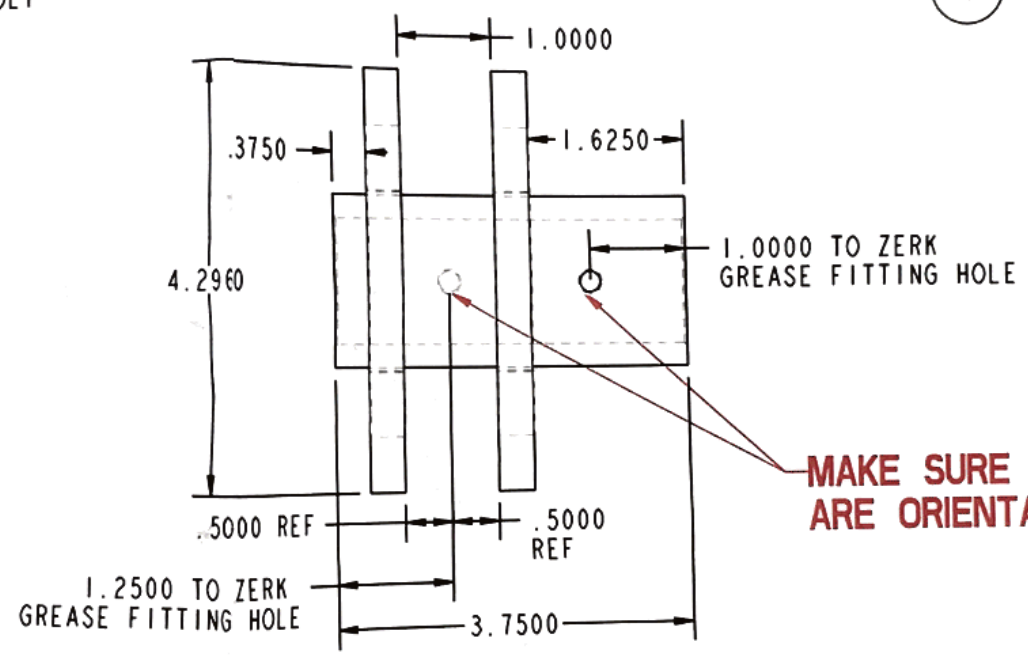
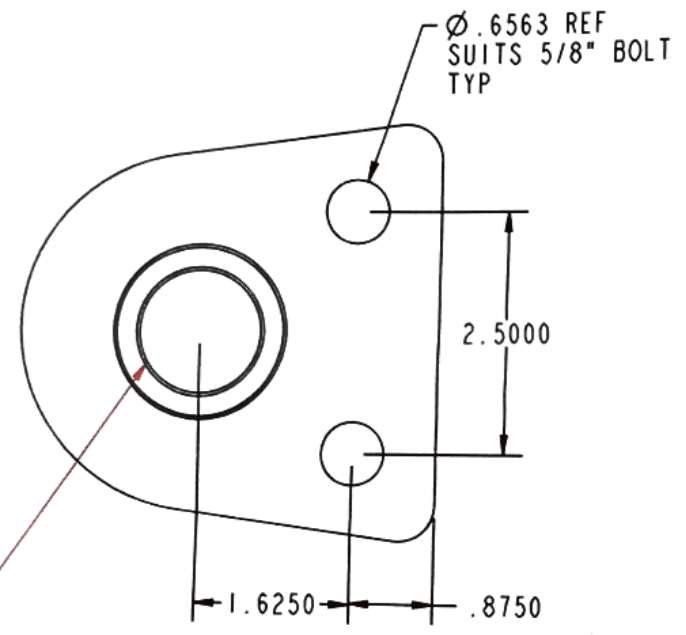
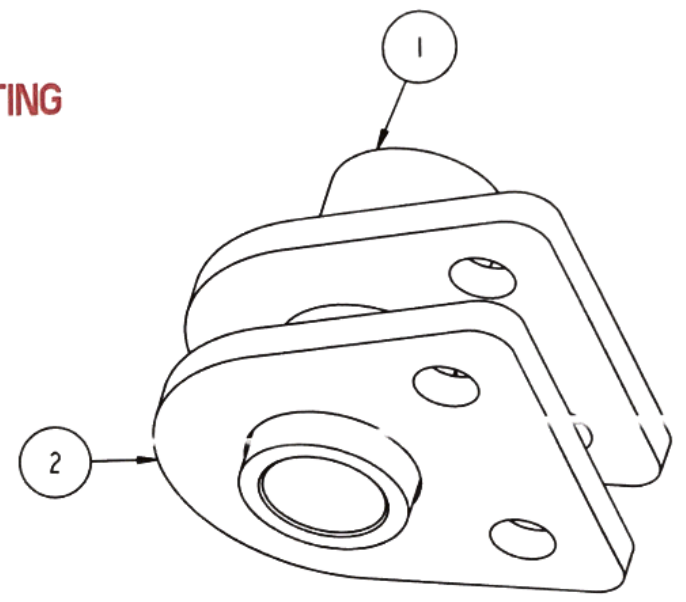
PCS ASSY TOTAL 24
 PCS ASSY PER TRAILER 2
 5553 TU KITS

REVISIONS				
REV	DESCRIPTION	BY	APPR	DATE
B	ECN#006969	BB	AM	08-JUL-15

MAKE SURE GREASE FITTINGS ARE ORIENTATED CORRECTLY



WELD THS ASSEMBLY ON ALUMINUM ARM BY BOLTING PLATES ON ARM AND THEN INSERTING TUBE AS ORIENTATED BELOW

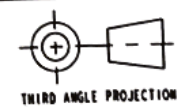


MAKE SURE GREASE FITTINGS ARE ORIENTATED CORRECTLY

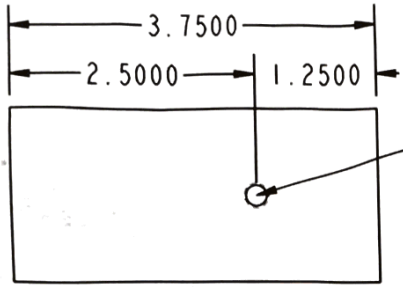
MAKE SURE INSIDE SURFACE IS BURR-FREE

ITEM	QTY	SP	DESCRIPTION	DWG. NO.	R.L.	REV	VER
2	2	N	BUSHING BOLT-ON MOUNT PLATE	40WF0346_01	In Work	A	0
1	1	N	BUSHING, FLIP ROOF ARM	40AWF_000292_01	In Work	B	6

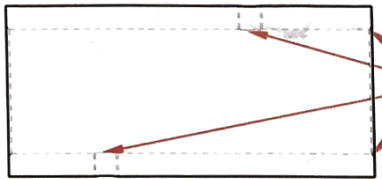
PROCESS INFO FOR REFERENCE ONLY SEE GLOBAL SHOP FOR PROCESS INFO	UNLESS OTHERWISE SPECIFIED DIMENSIONS ARE IN INCHES		MODELED BY:	BB	18-NOV-13
	TOLERANCES:		DRAWN BY:	BB	18-NOV-13
	FRACTIONAL:		CHECKED BY:	AM	18-NOV-13
	DECIMALS:		DESC:		
1/32" ±1/32		REMOVABLE FLIP ROOF BUSHING ASSEMBLY			
1/16"-1/2" ±1/16		SUITS STRAIGHT ALUMINUM ARM			
ANGULAR:		SEC7C KINEMATIC FLIP ROOF MOTOR ASSEMBLY			
MACHINED ±0.25°		MATERIAL DESCRIPTION:			
BEND ±0.5°		N/A			
TWO PLACE ±0.06		MATERIAL: N/A			
THREE PLACE ±0.031		FINISH: N/A			
INTERPRET GEOMETRIC TOLERANCING PER: ANSI		WEIGHT: 3.794 LBS.			
PROPRIETARY AND CONFIDENTIAL		DWG. NO.: 40WF0345_01			
THE INFORMATION CONTAINED IN THIS DRAWING IS THE SOLE PROPERTY OF TITAN TRAILERS INC. ANY REPRODUCTION IN PART OR AS A WHOLE WITHOUT THE WRITTEN PERMISSION OF TITAN TRAILERS INC. IS PROHIBITED.		SCALE: 1:2			
RELEASE LEVEL	In Work	SHEET 1 OF 1		REV	VER
STOCK PART	N			B	1



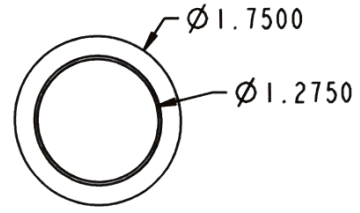
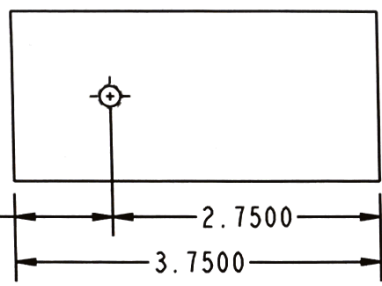
PCS ASSY TOTAL 24
 TRAILERS 12
 PER TRAILER 2
 5553 TU KITS



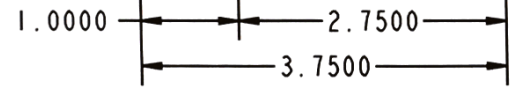
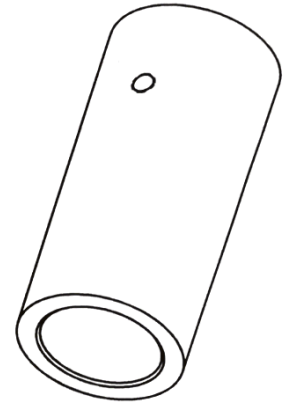
1/4-28 UNF - 2B TAP ∇ 0.250
 #3 DRILL (0.213) ∇ 0.250 - (1) HOLE
 SUITS ZERK GREASE FITTING
 TYP 2 PLACES



MAKE SURE INSIDE OF TUBE IS BURR-FREE



REVISIONS				
REV	DESCRIPTION	BY	APPR	DATE
B	ECN#006969	BB	AM	08-JUL-15

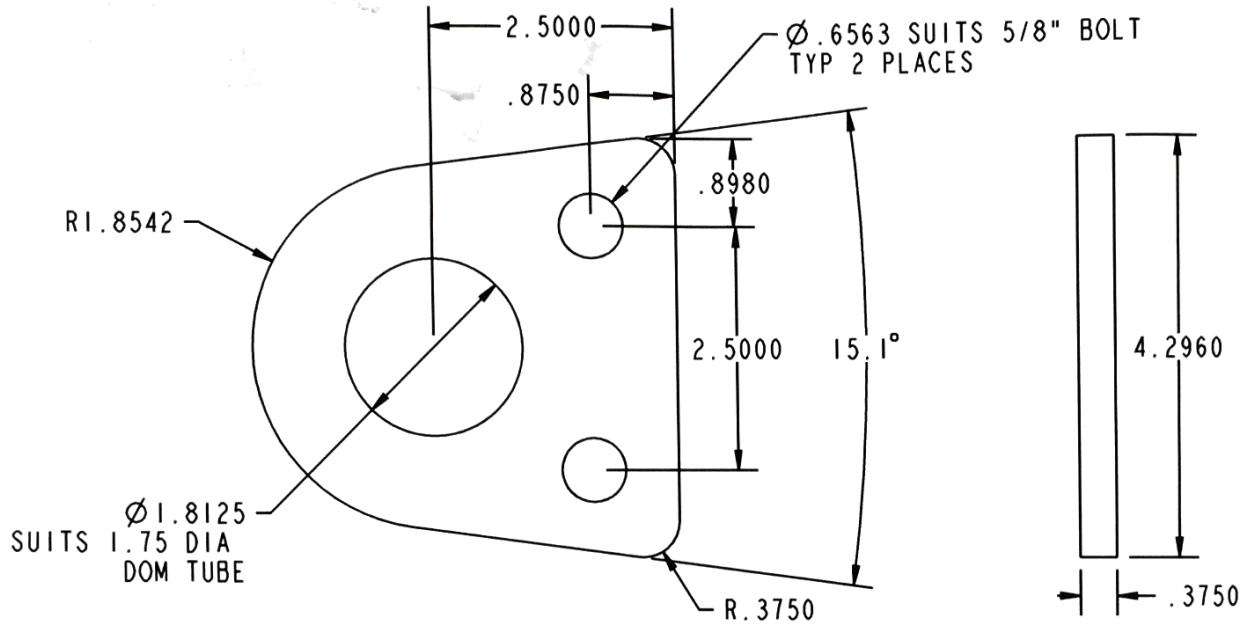
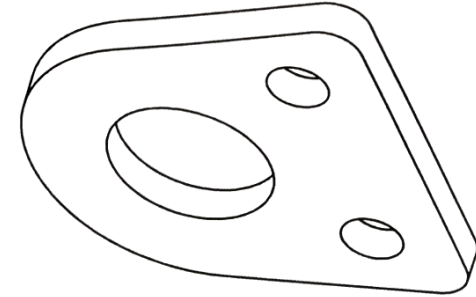
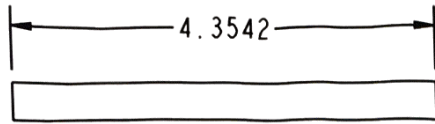


PROCESS INFO FOR REFERENCE ONLY SEE GLOBAL SHOP FOR PROCESS INFO	ALTERNATE PROCESS	UNLESS OTHERWISE SPECIFIED DIMENSIONS ARE IN INCHES	NAME	DATE			
		TOLERANCES:	MODELED BY:	BB		09-OCT-12	
		FRACTIONAL:	DRAWN BY:	BB		09-OCT-12	
		1/32" \pm 1/32	1/16"-1/2" \pm 1/16	CHECKED BY:	AM	09-OCT-12	
		ANGULAR:	MACHINED \pm 0.25°	DESCRIPTION:			
		BEND \pm 0.5°					BUSHING, FLIP ROOF ARM
		DECIMALS:	TWO PLACE \pm 0.06	SUITS STRAIGHT ALUMINUM ARM			
		THREE PLACE \pm 0.031					
		INTERPRET GEOMETRIC TOLERANCING PER: ANSI	PROPRIETARY AND CONFIDENTIAL	MATERIAL NUMBER:	MATERIAL DESCRIPTION:		
		THE INFORMATION CONTAINED IN THIS DRAWING IS THE SOLE PROPERTY OF TITAN TRAILERS INC. ANY REPRODUCTION IN PART OR AS A WHOLE WITHOUT THE WRITTEN PERMISSION OF TITAN TRAILERS INC. IS PROHIBITED.		STP000244	1.75" OD, 1.275" ID SMLS TUBE		
	RELEASE LEVEL	In Work	MATERIAL LENGTH:	MATERIAL WIDTH:	MATERIAL TYPE:	FINISH:	WEIGHT:
PROCESS	STOCK PART	N	3.750		50W	MILL	1.196 LBS
			DWG. NO.: 40AWF_000292_01			REV	VER
			SCALE: 1:2 SHEET 1 OF 1			B	6

PCS ASSY TOTAL 24
 NUMBER OF TRAILERS 12
 PCS ASSY PER TRAILER 2
5553 TU KITS



REVISIONS				
REV	DESCRIPTION	BY	APPR	DATE
A	FIRST ISSUE	BB	AM	18-NOV-13



ALTERNATE PROCESS	UNLESS OTHERWISE SPECIFIED DIMENSIONS ARE IN INCHES	MODELED BY:	NAME	DATE			
		DRAWN BY:	BB	18-NOV-13			
	TOLERANCES: FRACTIONAL: 1/32" ±1/32 1/16"-1/2" ±1/16	CHECKED BY:	BB	18-NOV-13			
	ANGULAR: MACHINED ±0.25° BEND ±0.5°	DESCRIPTION:	AM	18-NOV-13			
	DECIMALS: TWO PLACE ±0.06 THREE PLACE ±0.031	BUSHING BOLT-ON MOUNT PLATE			12		
	INTERPRET GEOMETRIC TOLERANCING PER: ANSI	SUITS SEC7C STRAIGHT ALUMINUM ARM					
	PROPRIETARY AND CONFIDENTIAL	MATERIAL NUMBER:	MATERIAL DESCRIPTION:		48		
	THE INFORMATION CONTAINED IN THIS DRAWING IS THE SOLE PROPERTY OF TITAN TRAILERS INC. ANY REPRODUCTION IN PART OR AS A WHOLE WITHOUT THE WRITTEN PERMISSION OF TITAN TRAILERS INC. IS PROHIBITED.		0.375" STEEL PLATE				
PLASMA	RELEASE LEVEL	MATERIAL LENGTH:	MATERIAL WIDTH:	MATERIAL TYPE:	FINISH:	WEIGHT:	4
PROCESS	STOCK PART			44W	MILL	1.299 LBS	
		DWG. NO.: 40WF0346_01		REV	VER		
		SCALE: 1:2		A	0		
		SHEET 1 OF 1					

5553 TU KITS

PCS ASSY TOTAL

48

NUMBER OF TRAILERS

PCS ASSY PER TRAILER